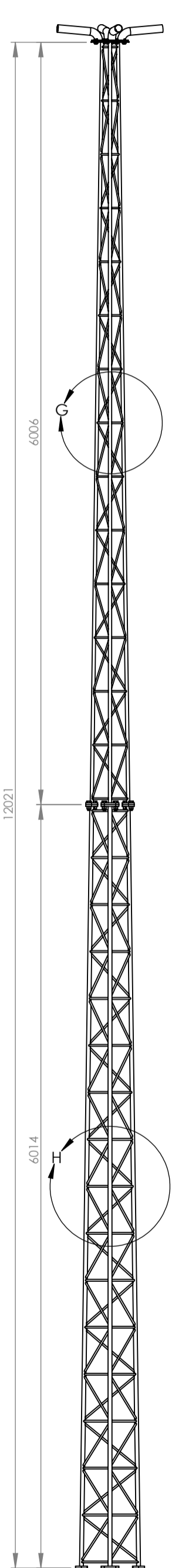
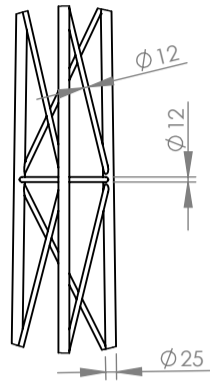


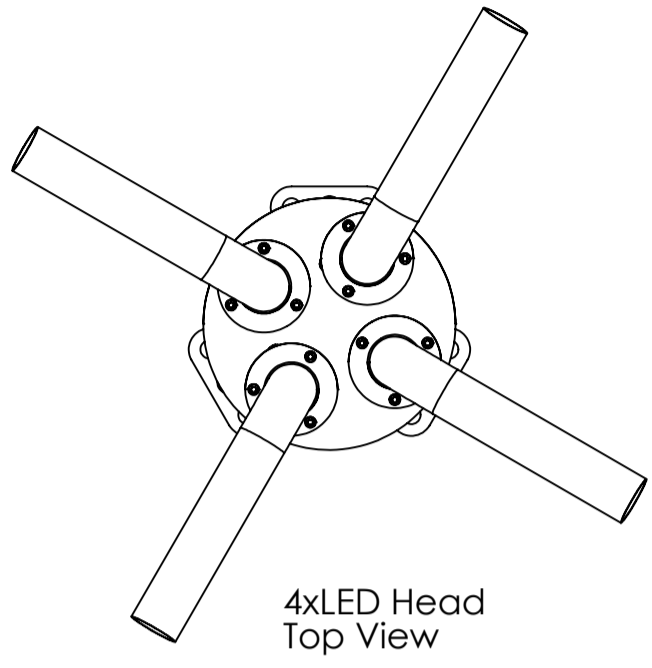
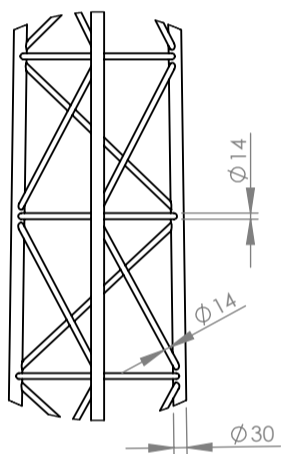
Lighting Tower Alupro WSH12-W450-125



DETAIL G
SCALE 2 : 35

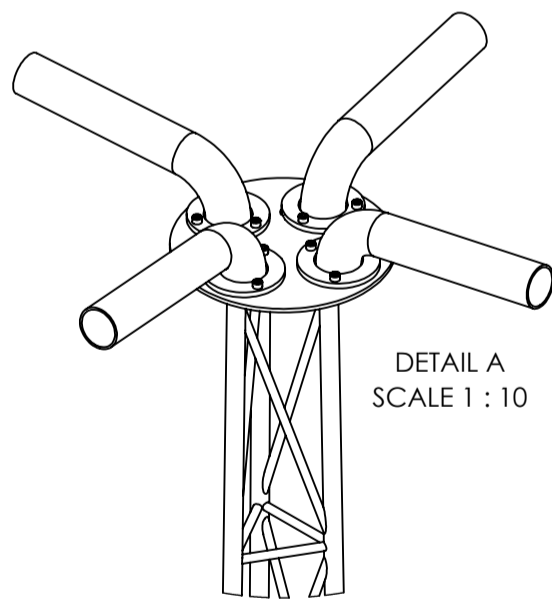


DETAIL H
SCALE 2 : 35

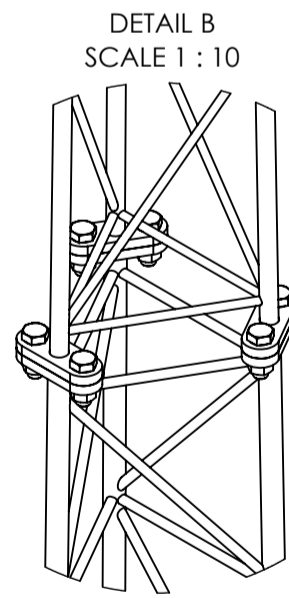


Technical Specifications:

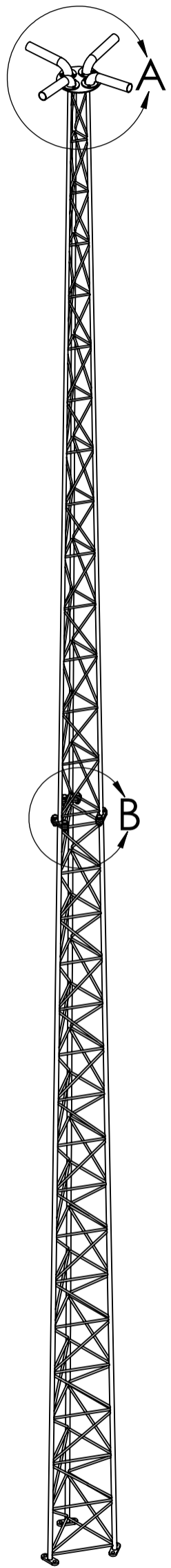
- Lighting tower for 4 LED floodlights
- Removable (interchangeable) top head
- In the presented configuration: model with a 60 mm pipe
- LED fixture mounting pipes adjustable along one axis
- Top plate with cable pass-through openings for the lamps
- Tower height: 12 m
- Tower base width: 450 mm measured on the rod axes
- Constructed with S235 solid steel rods
- Weight of the steel version: 264 kg
- Optional aluminum version available
- Anchored to the foundation with 6 × M20 anchor bolts
- Connection flanges made of 15 mm steel plate
- Connecting bolts M20 × 60 — 6 per level
- Rod cross-sections: 30 mm, 20 mm, 14 mm, and 12 mm diameter
- Modules of 6 m in length



4xLED Head



Flange Joint
bolts M16x60



CHYBA ŻE OKREŚLONO INACZEJ: WYMIARY SĄ W MILIMETRACH WYKOŃCZENIE POWIERZCHNI: TOLERANCJE: LINIOWA: KĄTOWA:		WYKOŃCZENIE: hot dip zinc plated		STĘP OSTRE KRAWĘDZIE	NIE SKALUJ RYSUNKU	POPRAWKA
					Rysunek jest własnością Alupro S.C. Koplowanie i używanie bez zezwolenia narusza prawa autorskie	
NARYS.	M. Kubiak	PODPIS	DATA		TYTUŁ: Lighting Tower WSH12	
SPRAWDZ.					NR RYSUNKU 2025.02.24.07 rev.0	
ZATWIER.					Custom	
WYPROD.				MATERIAŁ: steel S235 OC	SKALA:1:20	
Z.JAKOŚCI				WAGA: XXX kg	ARKUSZ 1 Z 1	