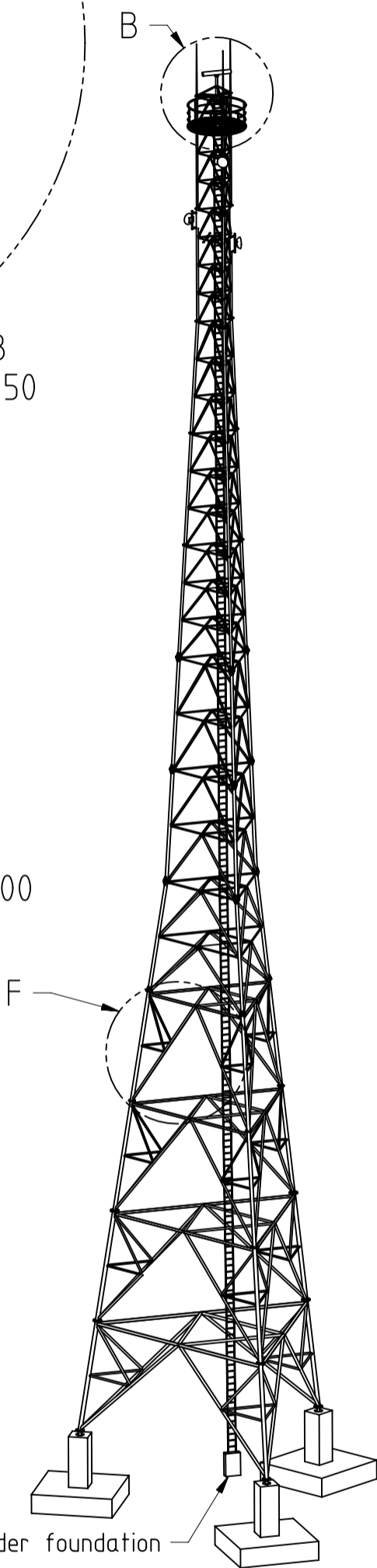
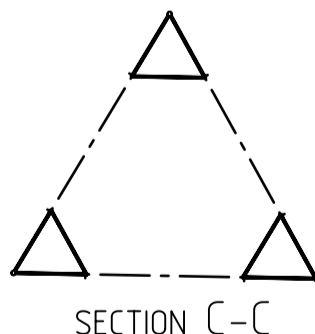
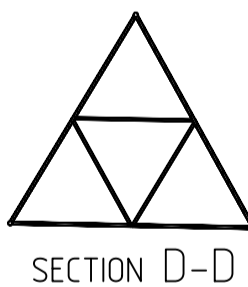
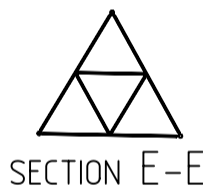
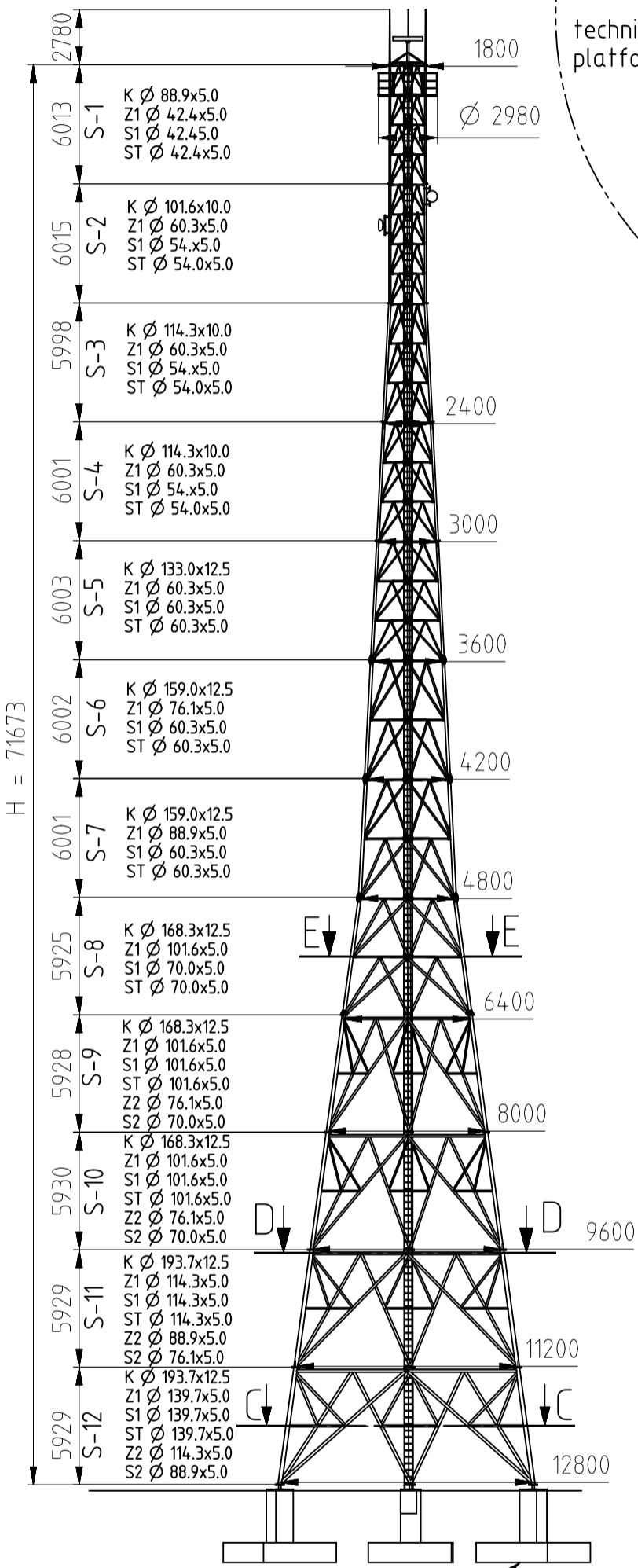
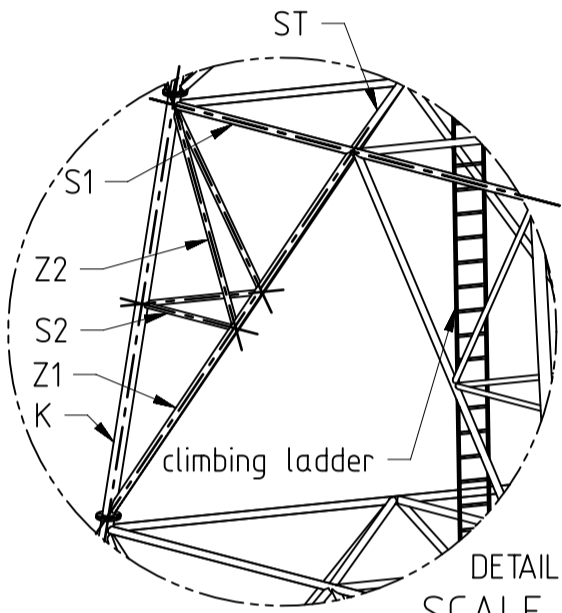
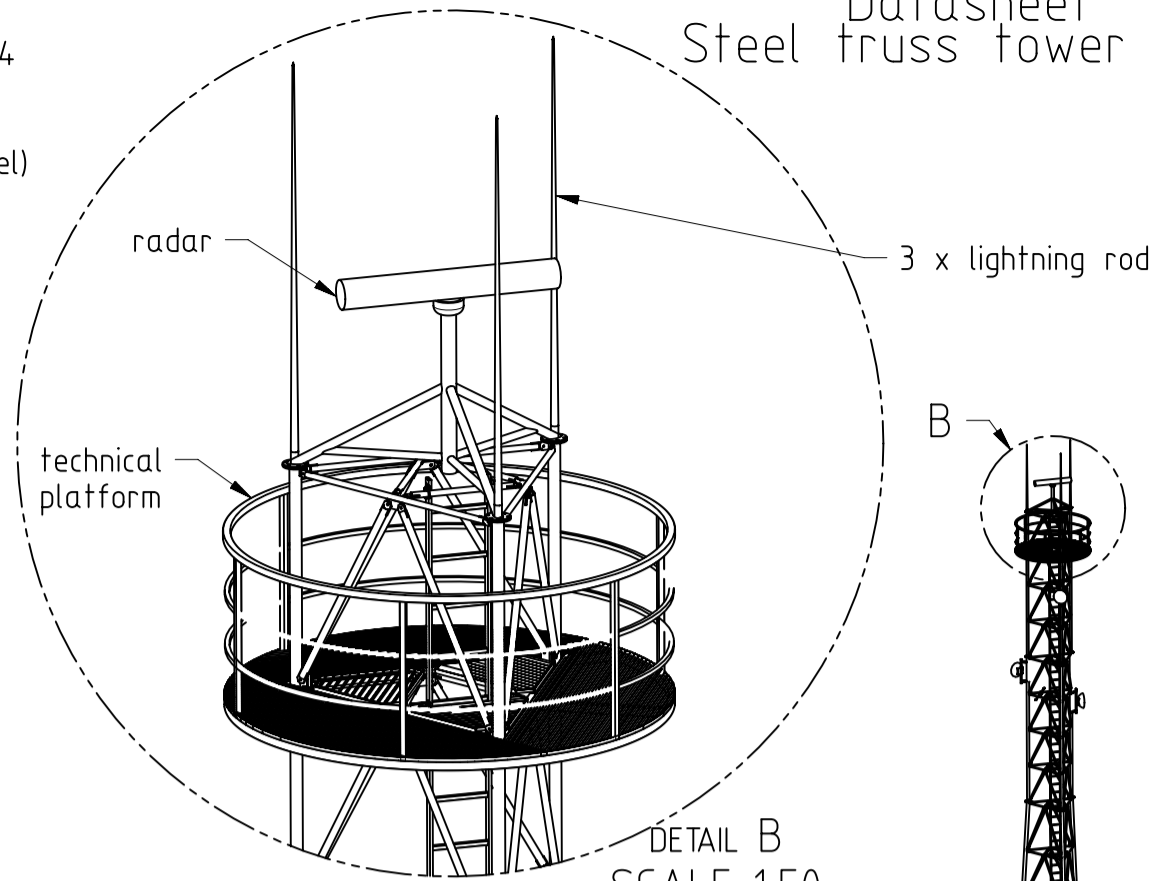


Datasheet
Steel truss tower H=72m

Specs:

calculated according to: Eurocode EN-1991-1-4
 characteristic wind speed: 30m/s
 characteristic wind pressure: 563Pa
 terrain type: 0 (open at sea level)
 maximum windload: 5m2 at the top
 (includes radar and technical platform)
 cable route: W=200mm
 material: S235
 weight: ~25.4t
 maximum top displacement: 390mm



example foundation feet
4.2x4.2x1.0 (H=3.7m)

Reaction for foundations:

maximum pressing eaction: 1112.5kN
 maximum pulling reaction: -979.30kN

<small>ISO 2768-1:2001 SERIES</small> <small>TOLERANCES (UNLESS OTHERWISE SPECIFIED):</small> <small>ABOVE 0.5 0.5 0.6 0.8 1.0 1.2 1.5 2.0 2.5 3.0 4.0 5.0 6.3 8.0 10 12 15 20 25 30 40 50 63 80 100 125 160 200 250 315 400 500 630 800 1000 1250 1600 2000 2500 3150 4000 5000 6300 8000 10000</small> <small>ANGLES</small> <small>TOLERANCE ±0.1 ±0.15 ±0.2 ±0.3 ±0.5 ±0.8 ±1.2 ±2</small> <small>LINEAR DIMENSIONS</small>				THIS DRAWING CONTAINS CONFIDENTIAL INFORMATION WHICH IS THE PROPERTY OF AluPro S.C. COMPANY. THIS DRAWING MAY NOT BE REPRODUCED, TRANSFERRED OR USED, OR ITS CONTENTS DISCLOSED WITHOUT THE PRIOR WRITTEN PERMISSION OF AluPro S.C. COMPANY			
MATERIAL: S235		QUANTITY: tbd		DRAWN BY: D.Wojciechowski			
MACHINE:				DATE: 17/09/2024			
DRAWING PREPARED FOR: AluPro				CHECKED BY:			
TITLE: Datasheet - steel truss tower H=72m W72-18-128 EC				3D FILE:			
FIRST ANGLE PROJECTION:		SCALE: 1 : 300		SHEET: 1 of 1			
		JOB NUMBER:		DRAWING NO°: 2024.09.17.01A			
		REV: A					