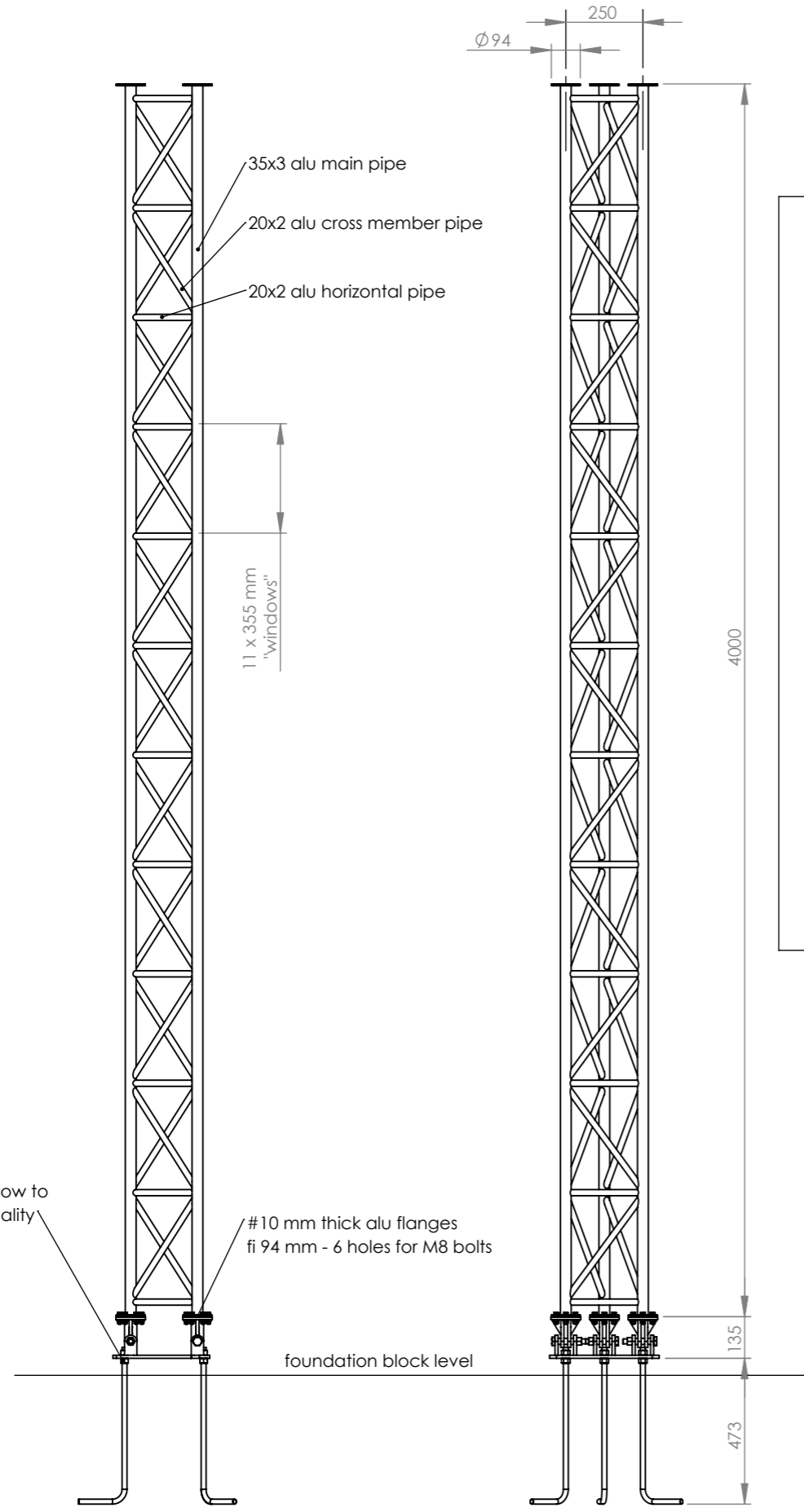


AluPro HD1-M250H4 CCTV / Luminary Tower



This is simple 4 meters high truss tower for CCTV surveillance cameras and/or luminaries
 Used for parking lots, open spaces perimeter security - every place where there are no permanent walls, fences to fix cameras, but elevated security is demanded.
 AluPro provides mounting plates and other equipment that facilitates professional installation of cameras and luminary equipment to our truss beams.

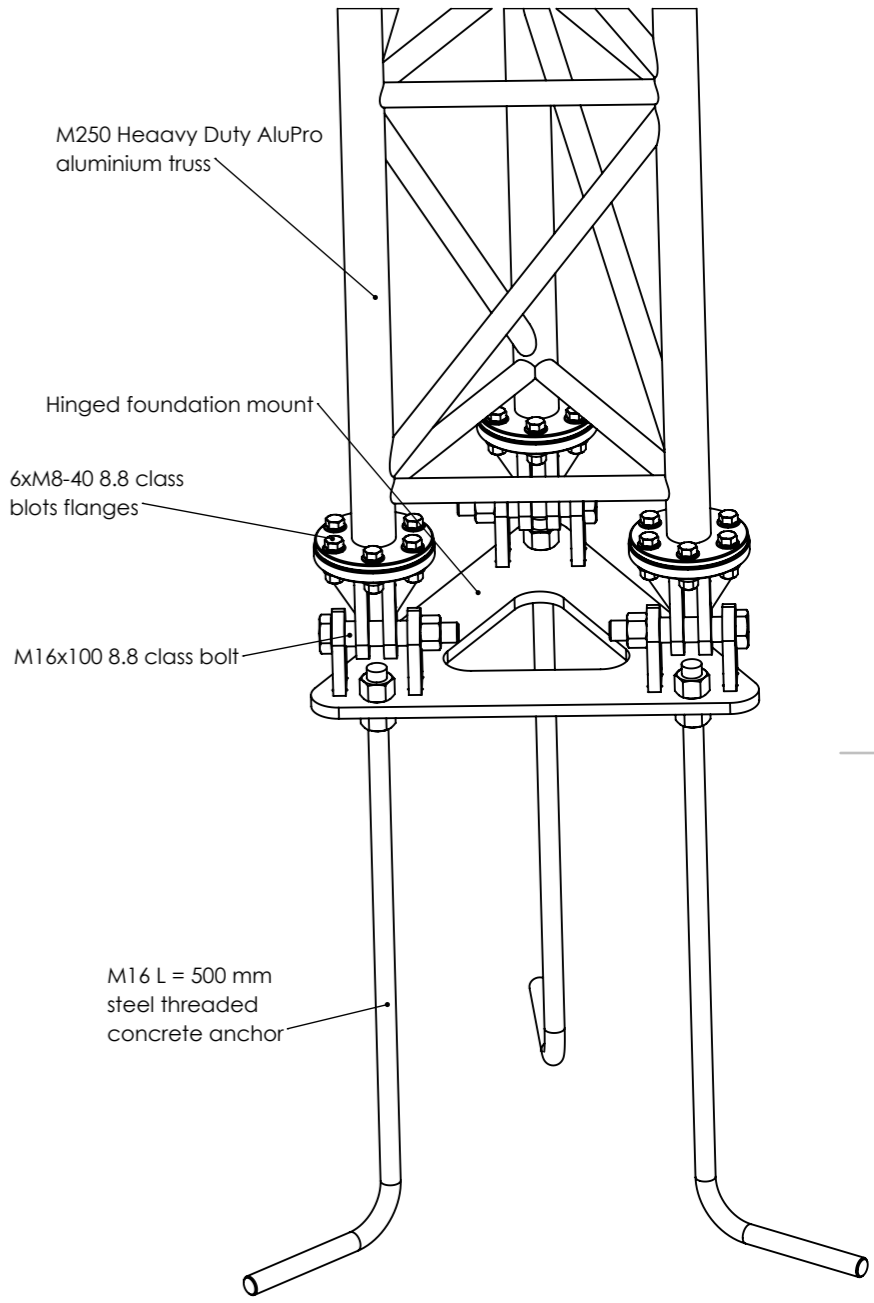
HD1M250H4 tower is prepared to work in II Wind Zone ($V_b=26$ m/s)
 In this conditions we do recommend foundation made as 1x1x1 concrete reinforced cube (reinforcement details subject to other documentation)

Performance Results for $V_b=26$ m/s:

- Max allowable load 0,75 square meters at the top of truss
- Max tilt at max wind 33 mm (below 1:100 limit)
- Max tension in the structure (100 Mpa limit) 89%
- Max critical stress-strain state 65%

Physical dimensions and features:

- 4 meters long main M250 truss beam
- Hinged foundation mount allows folding the truss for maintenance of equipment
- Hinged foundation double nuts allow verticality correction
- 35x3 mm main pipes for extra strenght (HD version only)
- Total height 4135 mm above foundation block + regulation spacing
- 3 x M16-500 rod anchors for foundation (included in package)
- Total mass: 28 kgs



CHYBA ŻE OKREŚLONO INACZEJ: WYMIARY SĄ W MILIMETRACH WYKOŃCZENIE POWIERZCHNI: TOLERANCJE: LINIOWA: KĄTOWA:		WYKOŃCZENIE: Raw aluminium Zinc plated steel		STEP OSTRE KRAWĘDZIE	NIE SKALUJ RYSUNKU	POPRAWKA
					Rysunek jest własnością Alupro S.C. Kopiowanie i używanie bez zezwolenia narusza prawa autorskie	
NARYS.	M. Kubiak	PODPIS	DATA	TYTUŁ: HD1M250L4 Truss DataSheet		
SPRAWDZ.				NR RYSUNKU 2022.01.20.02 rev. 0		
ZATWIER.				MATERIAŁ: S235 steel AW6060/6063 and 6082 alu		
WYPROD.				WAGA: 28 kg		
Z.JAKOŚCI				SKALA:1:50		
				ARKUSZ 1 Z 1		A3