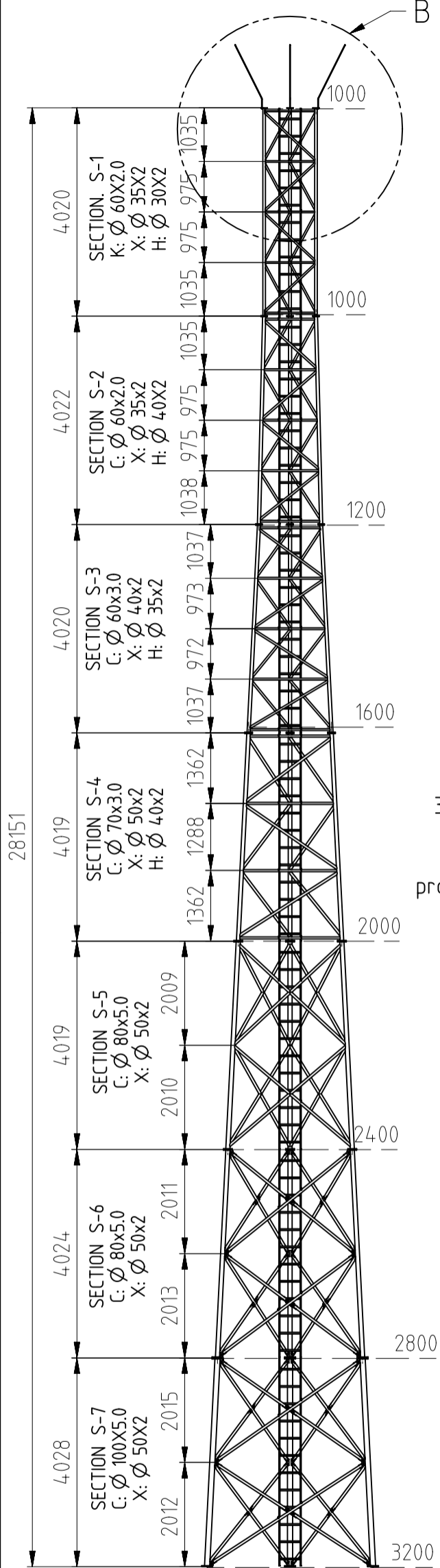
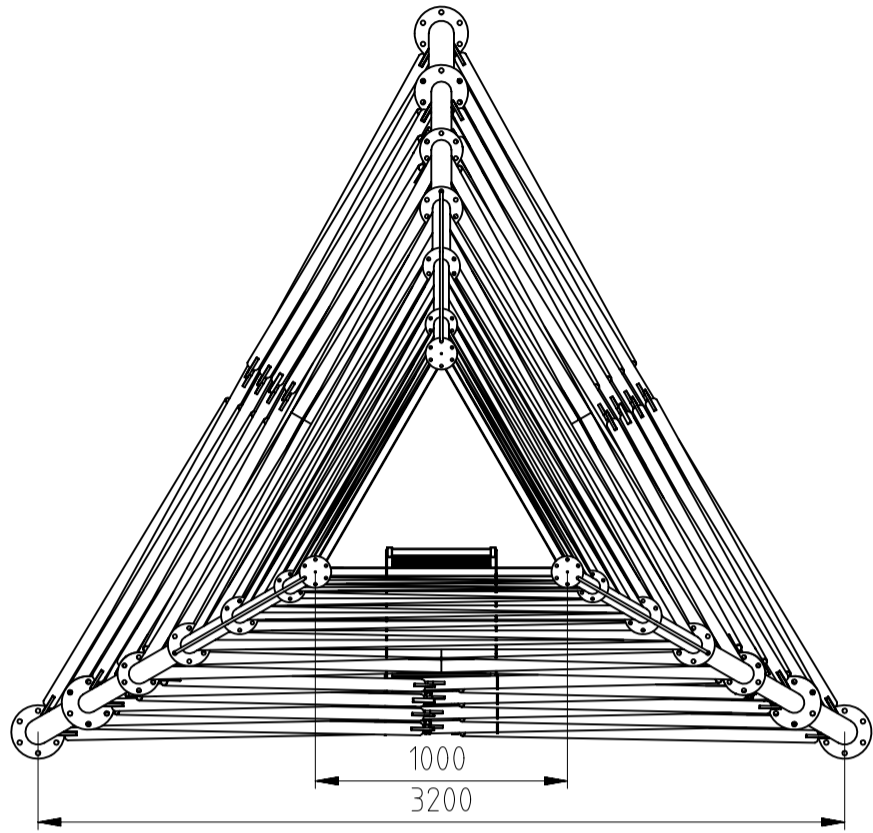


Assembly drawing AluPro aluminum tower T1000-28 H=28.0m (W28-10-32)

SIDE VIEW 1:100

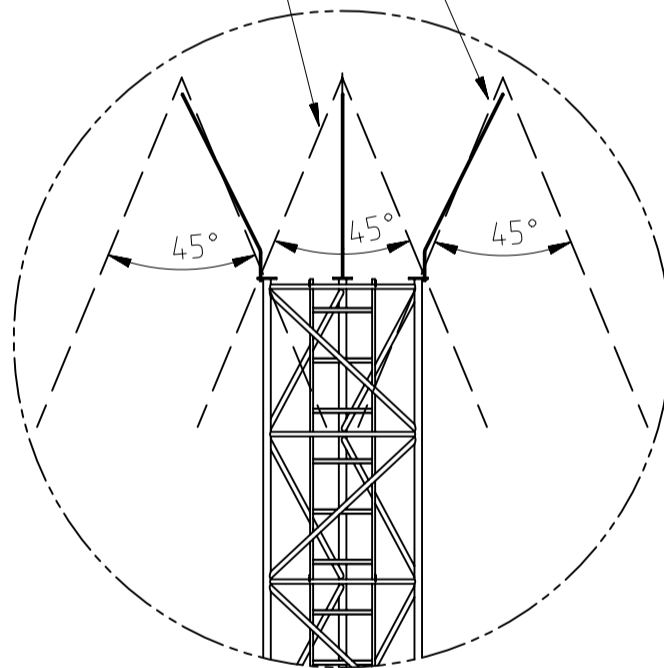


TOP VIEW 1:50



3 x typical lightning rod

protection cone 45°



DETAIL B
SCALE 1:50

Basic technical data

- Height: 28m
- Weight: 530kg
- Material: alu AW6063T6/AW6082T6
- Width at the bottom: 3.2m
- Width at the top: 1.0m
- climbing ladder: yes, inside
- section joints: flanges

Available accessories

- securo system (safety for technician)
- antenna holders (radiolink, sectorial, omni)
- resting hatches
- separation crowns
- cable ladders / trays
- etc

<small>TOLERANCES (UNLESS OTHERWISE SPECIFIED) ISO 2768-1/2009 "M" SERIES</small> <small>LINEAR DIMENSIONS</small> <table border="1"> <tr><td>ABOVE</td><td>0.5</td><td>3</td><td>6</td><td>30</td><td>120</td><td>400</td><td>1000</td><td>2000</td><td>4000</td></tr> <tr><td>BELOW</td><td></td><td></td><td></td><td></td><td></td><td></td><td></td><td></td><td></td></tr> <tr><td>ANGLES</td><td></td><td></td><td></td><td>170</td><td>10</td><td>50</td><td>120</td><td>160</td><td></td></tr> <tr><td>TOLERANCE</td><td>± 0.1</td><td>± 0.1</td><td>± 0.2</td><td>± 0.3</td><td>± 0.5</td><td>± 0.8</td><td>± 1.2</td><td>± 2</td><td></td></tr> </table>	ABOVE	0.5	3	6	30	120	400	1000	2000	4000	BELOW										ANGLES				170	10	50	120	160		TOLERANCE	± 0.1	± 0.1	± 0.2	± 0.3	± 0.5	± 0.8	± 1.2	± 2		THIS DRAWING CONTAINS CONFIDENTIAL INFORMATION WHICH IS THE PROPERTY OF AluPro S.C. COMPANY. THIS DRAWING MAY NOT BE REPRODUCED, TRANSFERRED OR USED, OR ITS CONTENTS DISCLOSED WITHOUT THE PRIOR WRITTEN PERMISSION OF AluPro S.C. COMPANY			
	ABOVE	0.5	3	6	30	120	400	1000	2000	4000																																		
	BELOW																																											
	ANGLES				170	10	50	120	160																																			
	TOLERANCE	± 0.1	± 0.1	± 0.2	± 0.3	± 0.5	± 0.8	± 1.2	± 2																																			
	MATERIAL:	AW6063T6/AW6082T6	QUANTITY:	DRAWN BY:	D.Wojciechowski																																							
	MACHINE:			DATE:	22-06-2016																																							
DRAWING PREPARED FOR:	AluPro		CHECKED BY:																																									
TITLE:	Tower T1000-28 Assembly		3D FILE:																																									
FIRST ANGLE PROJECTION:			SCALE:	1 : 100																																								
	AluPro S.C.		SHEET:	1 of 1																																								
			JOB NUMBER:																																									
			DRAWING NO°:	2016.06.22.19A																																								
			REV:	A																																								